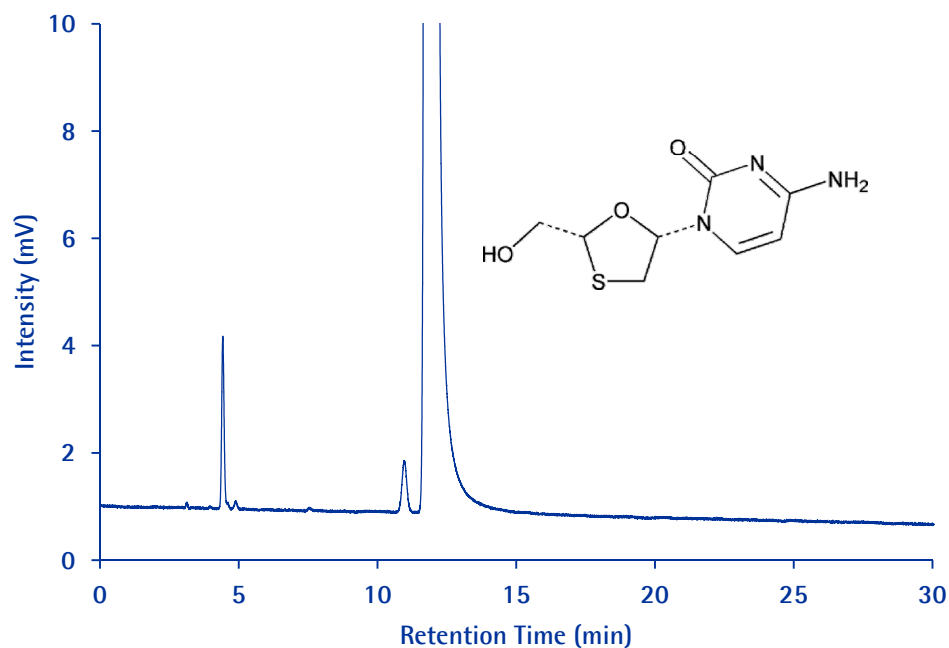


Lamivudine and Related Substances (USP)

Purospher®STAR RP-18 endcapped

Chromatographic Conditions

Column:	Purospher®STAR RP-18 endcapped (5µm) Hibar® RT 250x4.6 mm	1.51456.0001
Injection:	10 µL	
Detection:	UV 277 nm	
Cell:	8 µL	
Flow Rate:	1.0 mL/min	
Mobile Phase:	Buffer: 0.025 M Ammonium acetate solution, with pH adjusted to 3.8 ± 0.2 with acetic acid Mix buffer and methanol 95:5 (v/v).	
Temperature:	35° Celsius	
Diluent:	mobile phase	
Sample:	250 ppm (0.25 mg/mL) Lamivudine and traces of lamivudine diastereomer	
Pressure Drop:	134 Bar (1943 psi)	



Chromatographic Data

No.	Compound	Time (min)	Tailing Factor (TUSP)	Relative Retention Time (RRT)	Resolution (Rs)
1	Specified Impurity 1	4.4	1.1	0.4	
2	Specified Impurity 2	11.0	1.0	0.9	
3	Lamivudine	11.9	1.0	1.0	2.9