

ECH-Lysine Sepharose 4 Fast Flow

ECH-Lysine Sepharose™ 4 Fast Flow is a group specific medium for isolation of plasminogen and plasminogen activator.

It is based on highly crosslinked 4% agarose thus enabling rapid processing of large sample volumes. L-Lysine is covalently bound to a long hydrophilic spacer arm attached to Sepharose 4 Fast Flow via a stable ether linkage, Figure 1.

ECH-Lysine Sepharose 4 Fast Flow was designed for industrial purification of plasminogen and plasminogen activator [1-5].

Characteristics

Mean particle size: 90 µm

Bead structure: Macroporous crosslinked 4% agarose

Ligand density: 13–18 µmol Lysine/ml drained medium

Binding capacity: > 1.5 mg Plasminogen/ml drained medium

Flow velocities: min. 200 cm/h, 25 cm bed height, 0.1 MPa distilled water, XK 50 column

Recommended pH ranges

working range: 3–12

cleaning-in-place: 2–13

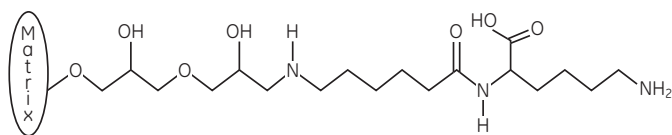


Fig 1. Partial structure of ECH-Lysine Sepharose 4 Fast Flow.

Principles

Affinity chromatography exploits an immobilized ligand that adsorbs a specific molecule or group of molecules under binding conditions and desorbs them under elution conditions.

These conditions depend on the target molecule, feed composition and the chromatography medium. For example, plasminogen adsorbs to ECH-Lysine Sepharose 4 Fast Flow when plasma (sodium chloride is added to a final concentration of 0.1 M) is pumped through the column. Unspecifically bound proteins are washed away with a buffer (50 mM sodium

dihydrogen phosphate, 0.1 M sodium chloride pH 7.4). The plasminogen is then eluted with the desorption buffer (adsorption buffer + 50 mM ε aminocaproic acid).

The binding conditions have to be studied together with the rest of the chromatographic conditions (i.e. sample load, flow velocity, bed height, regeneration, cleaning-in-place, etc.) to establish the conditions that will bind the largest amount of target molecule, in the shortest time and with the highest product recovery. We recommend a bed height of 10–15 cm to allow high flow rates to be used.

As a guide, pressure/flow curves for the base matrix Sepharose 4 Fast Flow in a K 50/30 and a BP 113 column are shown in Figure 2. Regeneration should restore the original function of the adsorbent. Depending on the nature of the sample, regeneration is normally performed after each cycle followed by re-equilibration in start buffer. To prevent build up of contaminants over time, more rigorous protocols may have to be applied (see below: Cleaning-in-place).

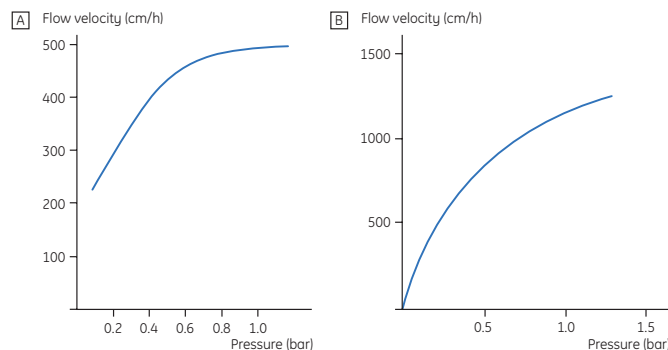


Fig 2. Pressure/flow velocity curve for Sepharose 4 Fast Flow in K 50/30, bed height 15 cm (A) and BioProcess™ 113, bed height 5 cm (B) (Work from Amersham Pharmacia Biotech).

This product is part of our Custom Designed Media programme and is available for evaluation. It is not yet a standard product. If you are interested in large-scale quantities it is important to contact us as early as possible via your local GE Healthcare representative.



Stability

The amide bond between the lysine and the spacer arm is stable under alkaline conditions. The figure below shows the stability of ECH-Lysine Sepharose 4 Fast Flow after storage in 0.1 M and 1.0 M NaOH solutions at 20°C and 40°C for 400 days. The change in the Lysine content is insignificant after storage of 400 days at pH 13 (0.1 M, NaOH) at room temperature, see Figure 3.

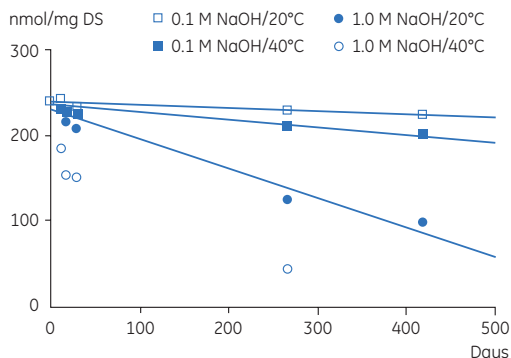


Fig 3. Ligand density (nmol Lysine/mg Dry Substance) after storage in 0.1 and 1 M Sodium hydroxide at 20°C and 40°C for 400 days.

Cleaning-in-place and sanitization

A cleaning or sanitization protocol has to be designed for each application. Generally sodium hydroxide (0.1–1 M) alone or in combination with sodium chloride (0.5–3 M) or ethanol (20–70%) is an effective sanitization agent. Prolonged exposure, i.e. several days, to pH greater than 13, see Figure 3,

www.gehealthcare.com

GE Healthcare
Amersham Biosciences AB
Björkgatan 30
751 84 Uppsala
Sweden

or lower than 2 should be avoided due to hydrolysis of the ligand at high pH and decomposition of the matrix at low pH. Strongly bound proteins can be removed with urea or guanidine hydrochloride [6].

Storage

We recommend that the medium should be stored at pH 5–7 in 20% ethanol. ECH-Lysine Sepharose 4 Fast Flow is supplied pre-swollen in a buffered 20% ethanol solution.

References

1. High-performance chromatographic method for the purification of tissue-type plasminogen activator. *J. Chromatogr.* **369**, 391–397, (1986). Matsuo, O. *et al.*
2. Large scale, rapid purification of recombinant tissue-type plasminogen activator. *FEBS Lett.* **209** (1), 13–17, (1986). Dodd, I. *et al.*
3. Purification and characterization of tissue plasminogen activator kringle-2 domain expressed in *Escherichia coli*. *Biochemistry* **28**, 1884–1891, (1989). Cleary, S., Mulkerrin, M.G. and Kelley, R.F.
4. Large-scale purification of human tissue-type plasminogen activator using monoclonal antibodies. *Biochim. Biophys. Acta* **830**, 1–10, (1985). Einarsson, M., Brandt, J. and Kaplan, L.
5. Plasminogen: Purification from human plasma by affinity chromatography. *Science*. **170**, 1095–1096 (1970). Deutsch, D.G. and Mertz, E.T.
6. Cleaning, sanitization and storage, in Handbook of Process Chromatography: A Guide to optimization, scale-up, and validation. Academic Press, pp. 188–214 (1997). Sofer, G. and Hagel, L.

Ordering Information

Product	Pack size	Code No.
ECH-Lysine Sepharose 4 Fast Flow	500 ml	17-0902-02
ECH-Lysine Sepharose 4 Fast Flow	5 L	17-0902-04

BioProcess and Sepharose are trademarks of Amersham plc, a General Electric Company going to market as GE Healthcare. GE, imagination at work and GE monogram are trademarks of General Electric Company.

All goods and services are sold subject to the terms and conditions of sale of the company within GE Healthcare which supplies them. GE Healthcare reserves the right, subject to any regulatory and contractual approval, if required, to make changes in specifications and features shown herein, or discontinue the product described at any time without notice or obligation.

© 2005 General Electric Company – All rights reserved.

Amersham Biosciences AB, a General Electric Company going to market as GE Healthcare.

GE Healthcare
Björkgatan 30, 751 84 Uppsala, Sweden

GE Healthcare

Munzinger Strasse 9, D-79111 Freiburg, Germany

GE Healthcare

Amersham Place, Little Chalfont, Buckinghamshire, HP7 9NA, UK

GE Healthcare

800 Centennial Avenue, P.O. Box 1327, Piscataway, NJ 08855-1327, USA

GE Healthcare

Sanken Bldg. 3-25-1, Hyakunincho, Shinjuku-ku, Tokyo 169-0073, Japan

Asia Pacific Tel: +852 2811 8693 Fax: +852 2811 5251 • Australasia Tel: +61 2 9899 0999 Fax: +61 2 9899 7511 • Austria Tel: 01/57606-1619 Fax: 01/57606-1627 • Belgium Tel: 0800 73 888 Fax: 03 272 1637 • Canada Tel: 800 463 5800 Fax: 800 567 1008 • Central, East, & South East Europe Tel: +43 1 982 3826 Fax: +43 1 985 8327 • Denmark Tel: 45 16 2400 Fax: 45 16 2424 • Finland & Baltics Tel: +358 (0)9 512 39 40 Fax: +358 (0)9 512 39 439 • France Tel: 01 69 35 67 00 Fax: 01 69 41 96 77 • Germany Tel: 0761/4903-490 Fax: 0761/4903-405 • Italy Tel: 02 27322 1 Fax: 02 27302 212 • Japan Tel: +81 3 5331 9336 Fax: +81 3 5331 9370 • Latin America Tel: +55 11 3933 7300 Fax: +55 11 3933 7304 • Middle East & Africa Tel: +30 210 9600 687 Fax: +30 210 9600 693 • Netherlands Tel: 0165 580 410 Fax: 0165 580 401 • Norway Tel: 815 65 555 Fax: 815 65 666 • Portugal Tel: 21 417 7035 Fax: 21 417 3184 • Russia & other C.I.S. & N.I.S. Tel: +7 (095) 232 0250 Fax: +7 (095) 230 6377 • South East Asia Tel: 60 3 8024 2080 Fax: 60 3 8024 2090 • Spain Tel: 93 594 49 50 Fax: 93 594 49 55 • Sweden Tel: 018 612 1900 Fax: 018 612 1910 • Switzerland Tel: 0848 8028 12 Fax: 0848 8028 13 • UK Tel: 0800 616928 Fax: 0800 616927 • USA Tel: 800 526 3593 Fax: 877 295 8102

